

UNIVERSITY COLLEGE BIRMINGHAM

PEBBLE MILL / HOLDERS LANE

PLAYING FIELDS

APRIL 2012



The Vision & Timescale

- **Education / Curriculum & Training / Community Engagement**
- **Realistic Working Environment**
- **Student Sporting Facilities - UCB**
- **Community** - wide and affordable access to new facilities.
 - have tried very hard to work with consortium but must have control with all UCB funds.
- **Schools** - supporting local schools without facilities
- **Security** - on site living presence – reducing minor vandalism
- **Can Begin Immediately** - must respect City Council tendering and planning requirements process



Financial Resources

- UCB will invest £millions over the next few years
- UCB has this resource available now – no borrowing requirement
- Upgrading and drainage for existing pitches
- Priority to new all-weather facility & pavilion
- New ‘satellite’ changing facilities for juniors / clubs
- Car parking on-site
- Ongoing maintenance, ability to develop and finance



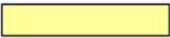
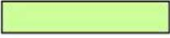


site plan

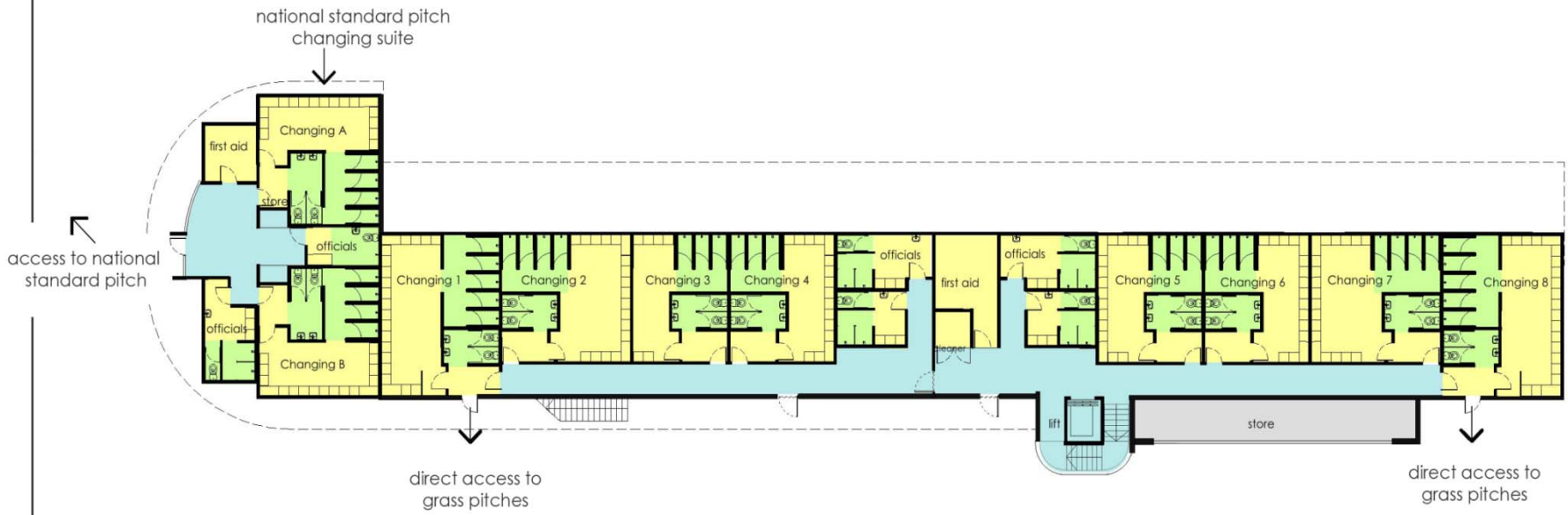
holders lane



INDICATIVE LAYOUT ONLY – OPEN TO DISCUSSIONS
“Blank Canvas” Approach








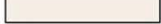
level - 2 | changing rooms

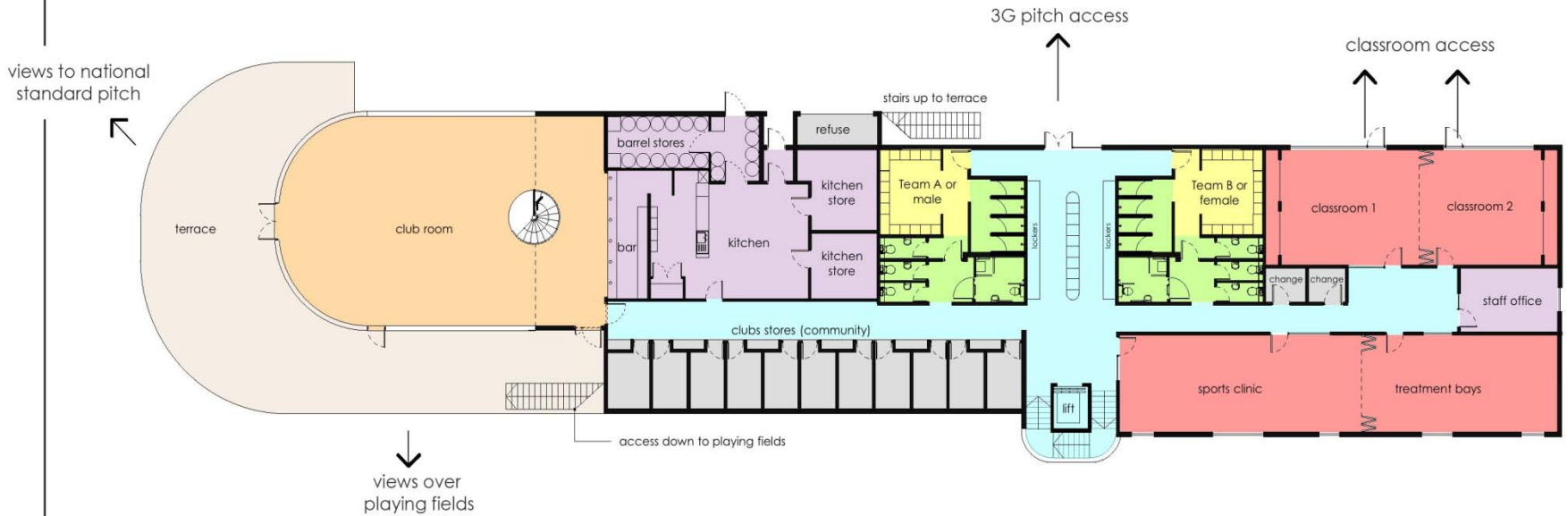
- Changing rooms 
- WC's / Showers 
- Circulation 
- Storage 



level - 1

3G pitch level

	UCB Educational Rooms		Circulation
	Bar / Club Area		Staff Only
	Changing Rooms		Storage
	WC's / Showers		Terrace

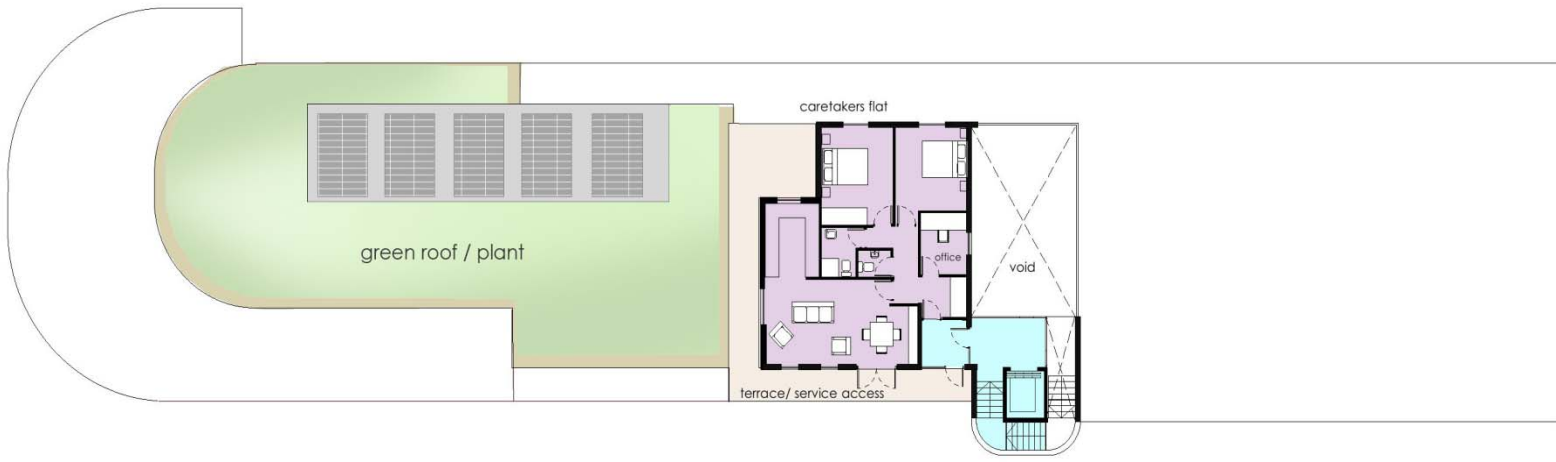
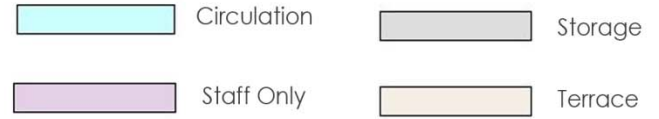


level 0 | entrance level

- Bar / Club Area
- Staff Only
- WC's / Showers
- Storage
- Circulation
- Terrace



level 1 caretaker's flat



Architect's Illustration

(FIRST ILLUSTRATION - ALL SUBJECT TO CONSULTATION AND AMENDMENTS)



Thank You

Questions – Discussions -Suggestions

